



**CIE Automotive**

**COMPANY PRESENTATION**

**MARCH 2020**



**1.**

**WHO WE ARE**

**5.**

**PRODUCTS**

**2.**

**GEOGRAPHICAL BALANCE**

**6.**

**TURNOVER EVOLUTION**

**3.**

**ENGINEERING CAPABILITIES**

**7.**

**SALES BY CUSTOMER**

**4.**

**SALES BY TECHNOLOGY**

# 1. WHO WE ARE

**CIE AUTOMOTIVE  
IS AN INDUSTRIAL  
GROUP  
SPECIALISED IN  
MANAGING HIGH  
VALUE-ADDED  
PROCESSES**



FOCUSED ON **AUTOMOTIVE SECTOR**



**GLOBAL FULL SERVICE SUPPLIER** FOR  
COMPONENTS AND SUB-ASSEMBLIES



LISTED ON MADRID AND MUMBAI **STOCK  
EXCHANGE MARKETS**



PROFESSIONAL HIGH LEVEL MANAGEMENT TEAM  
**WITH FULL COMMITMENT ON** CORPORATE  
GOVERNANCE



# 1. WHO WE ARE

1

**GEOGRAPHICAL  
BALANCE**

2

**ENGINEERING  
CAPABILITIES**

3

**MULTI-  
TECHNOLOGY &  
FLEXIBILITY**

4

**GROWTH &  
INVESTMENT  
DISCIPLINE**

5

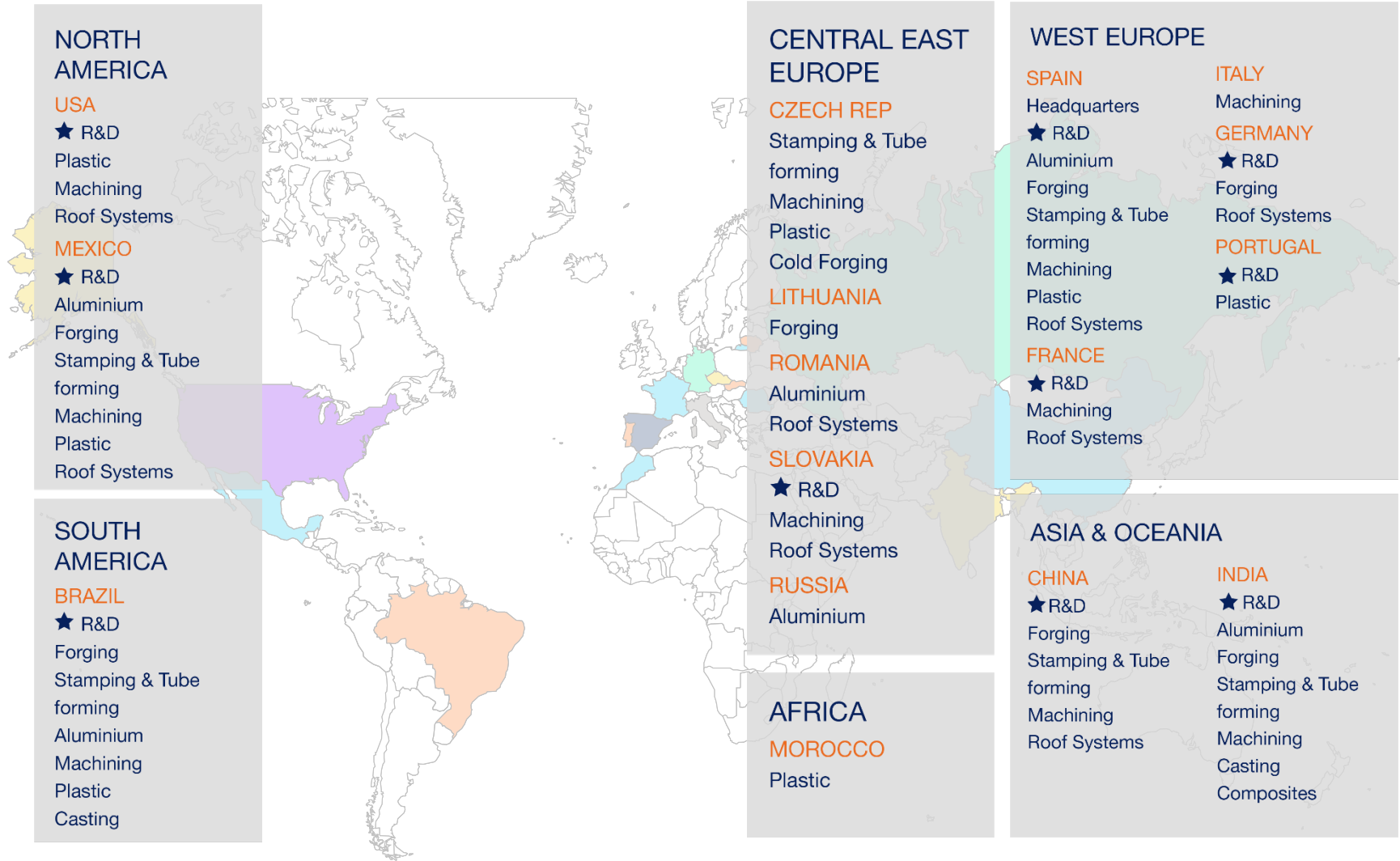
**LEAN &  
DECENTRALIZED  
STRUCTURE**

6

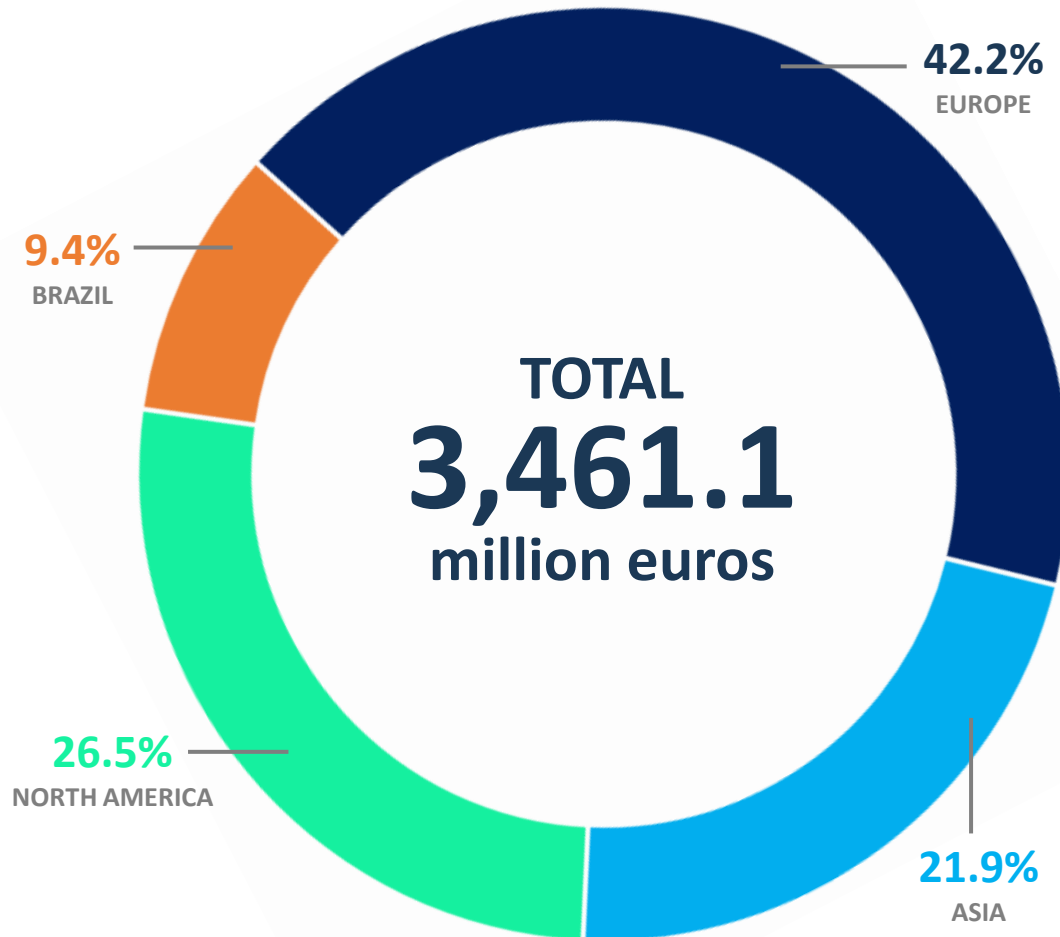
**ESG  
INTEGRATED  
IN BUSINESS  
MODEL**



## GLOBAL FOOTPRINT WITH ESTABLISHED LOCAL PRESENCE



# SALES BY GEOGRAPHY 2019

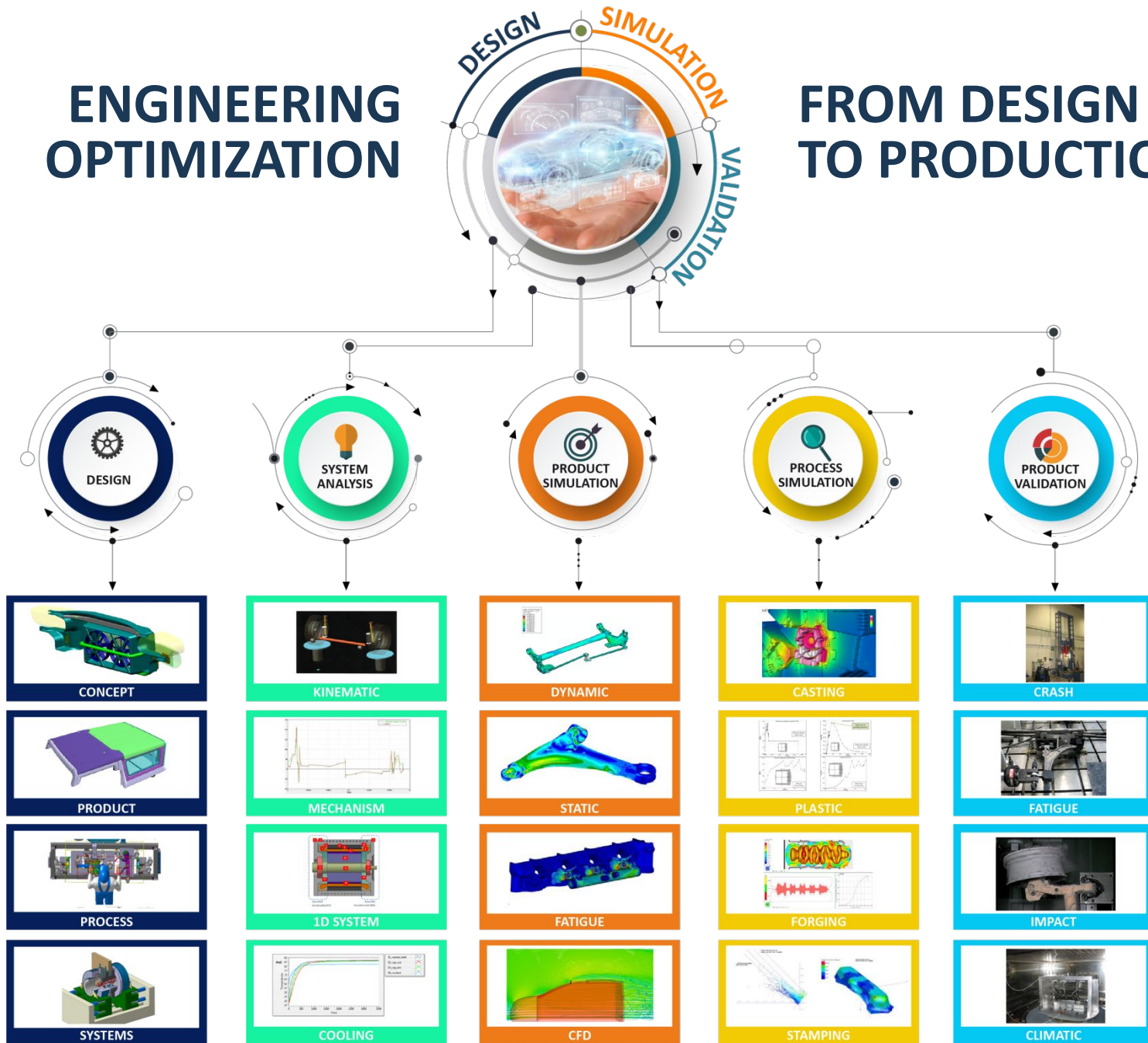




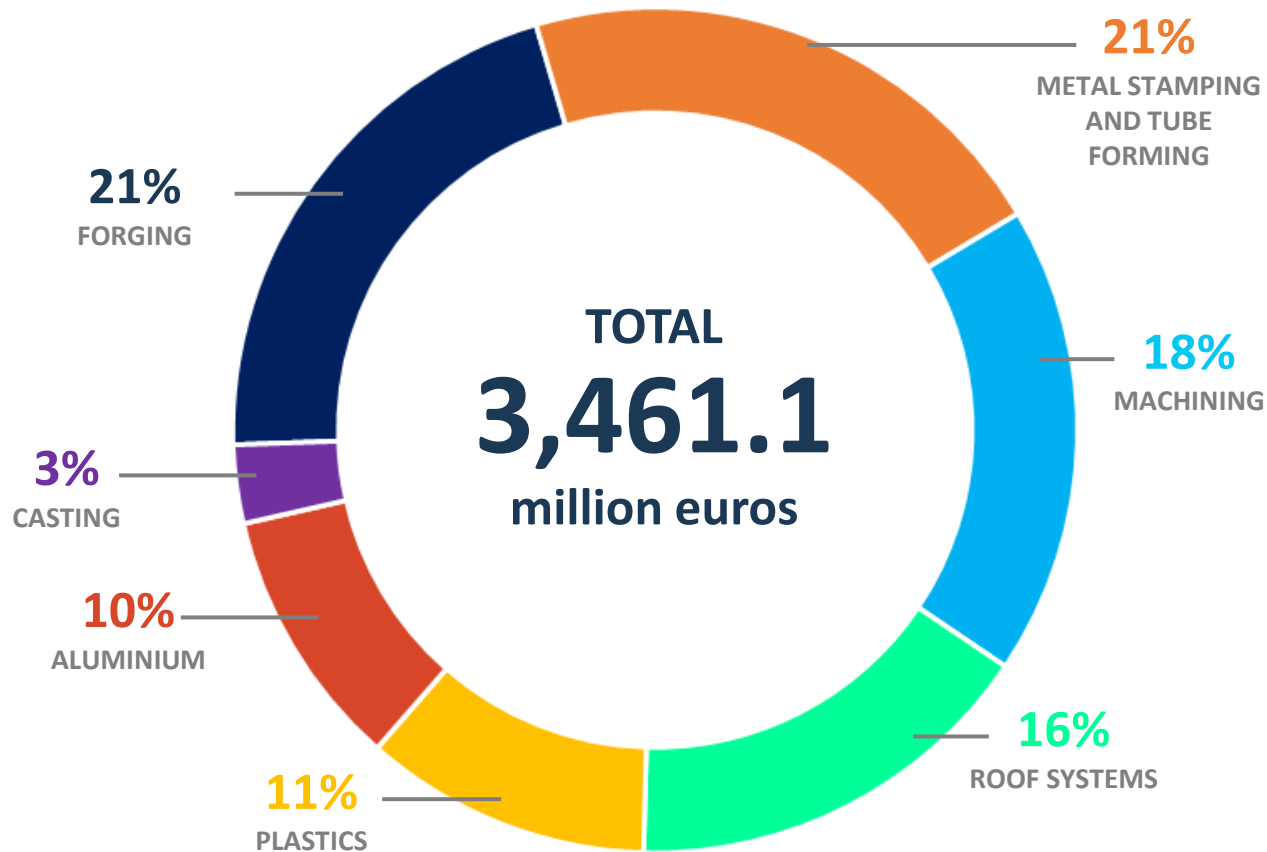
# 3. ENGINEERING CAPABILITIES

## ENGINEERING OPTIMIZATION

## FROM DESIGN TO PRODUCTION



## 4. SALES BY TECHNOLOGIES



**SALES BY  
TECHNOLOGIES  
2019**





# 5. PRODUCTS



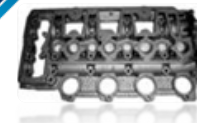
**eREDUCER HOUSING**  
xEV Gearbox



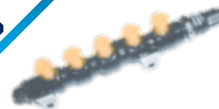
**CRANKSHAFT CAPS**  
MACHINING



**PISTONS**  
ALUMINIUM



**CAMSHAFT COVER**  
ALUMINIUM



**DIESEL COMMON RAIL**  
FORGING MACHINING



**GASOLINE COMMON RAIL**  
TUBE FORMING



**CRANKSHAFTS**  
FORGING



**E-MOTOR SHAFT**  
MACHINING



**WINDING HUB**  
METAL STAMPING



**CAMSHAFT BEARINGS**  
ALUMINIUM



**BRACKET**  
METAL



**ENGINE TUBES**  
TUBE FORMING



**VALVE GUIDES**  
MACHINING



**AIR TANKS**  
PLASTIC



**CAMSHAFT BEARINGS HOUSING**  
ALUMINIUM



**POWER ELECTRONIC COVER**  
xEV Electronics



**TURBO HOUSING**  
CASTING



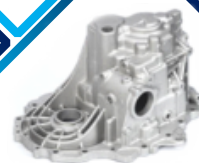
**CVT PISTONS**  
STAMPING



**LADDER FRAME**  
ALUMINIUM



**CRANKSHAFT**  
CASTING



**GEARBOX HOUSING**  
ALUMINIUM  
MACHINING

## POWERTRAIN & GEARBOX



## 5. PRODUCTS



**BRAKE BOOSTER  
METAL FORMING**



**MOTOR  
HOUSING  
STAMPING**



**CLUTCH & TRANSMISSION  
HOUSING  
ALUMINIUM  
MACHINING**



**I-BOOSTER  
METAL FORMING**



**OIL PAN  
STAMPING**



**PLANETARY CARRIER  
MACHINING**



**DOUBLE CLUTCH  
COMPONENTS  
STAMPING**



**FLANGES  
FORGING  
MACHINING**



**DIFFERENTIAL COMPONENTS  
FORGING  
MACHINING**



**AXLE SHAFT  
FORGING**



**CV- JOINTS  
FORGING**



**DIFFERENTIAL CASE  
MACHINING &  
ASSEMBLIES**



**AXLE SHAFT  
FORGING /  
MACHINING**



**PINS FOR  
DIFFERENTIAL CASE  
MACHINING**



**DIFFERENTIAL HOUSING  
CASTING**

# TRANSMISSION & BRAKES





**STRUCTURAL PARTS**



**STRUCTURAL PARTS**



**HUBS, OUTER RINGS  
FORGING & MACHINING**



**EPS COMPONENTS  
MACHINING**



**STRUCTURAL PARTS**



**EPS MAIN HOUSING  
ALUMINIUM**



**STEERING NUT  
MACHINING**



**STEERING COLUMN  
BRACKET  
ALUMINIUM**



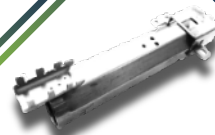
**SPINDLES  
FORGING & MACHINING**



**AIRBAG FRAME  
METAL FORMING**



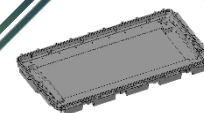
**STEERING HOUSINGS  
ALUMINIUM  
MACHINING**



**STEERING COLUMN TUBE  
TUBE FORMING**



**AXLE ARM  
STRUCTURAL PARTS**



**BATTERY BOX  
ALUMINIUM  
xEV**



**REAR AXLE  
METAL FORMING**



**CONTROL ARM  
STAMPING**



**BATTERY BOX  
STAMPING  
xEV**



**BATTERY BOX  
PLASTIC - COMPOSITE  
xEV**

## CHASSIS & STEERING & STRUCTURAL PARTS



# 5. PRODUCTS



ARM REST, CUP  
HOLDER, PILARS,  
GRAB HANDLES,  
SPEAKER GRILLS...  
PLASTIC



STORAGE  
COMPARTMENT  
PLASTIC



CENTRAL CONSOLE  
PLASTIC



IN MOULD  
DECORATION  
PLASTIC



LOAD FLOOR  
COMPOSITE SPRAY  
MOLDING



EMBLEMS  
PLASTIC



ASHTRAY  
PLASTIC



SEAT PARTS  
STAMPING



REAR WINDOW  
PACKAGE TRAY  
PLASTIC COMPRESSION  
MOLDING



WHEEL COVERS, REAR-  
VIEW MIRRORS  
DOOR HANDLES...  
PLASTIC



TRIM PARTS  
PLASTIC



SEAT PARTS  
STAMPING



GLOVE COMPARTMENT  
PLASTIC



CROSSBEAMS  
TUBE FORMING



CONNECTORS &  
JUNCTION BOXES  
ELECTRONICS



LOAD FLOOR  
COMPOSITE SPRAY  
MOLDING &  
THERMOFORMING



FRONT COVERS  
PLASTIC

# INTERIOR & EXTERIOR TRIM

## 5. PRODUCTS



**BRAKE DRUM**  
IRON CASTING



**AXLE BEAM**  
FORGING  
MACHINING



**BRAKE CAMSHAFTS**  
FORGING



**REAR AXLE ASSEMBLY**  
FORGING



**AXLE SPINDLE**  
FORGING  
MACHINING



**SECTOR SHAFT**  
FORGING  
MACHINING



**DIFFERENTIAL  
HOUSING**  
IRON CASTING



**FRONT LID**  
COMPOSITES



**AIR SUSPENSION BRACKET**  
FORGING  
MACHINING



**STABILIZER BAR**  
FORGING



**PISTON**  
FORGING  
WELDING  
MACHINING



**LEVER**  
FORGING



**SPINDLE**  
FORGING  
MACHINING



**AXLE SHAFT**  
FORGING

# COMMERCIAL VEHICLES





MANUAL ROOF  
SUNSHADE



PANORAMA  
WINDSCREEN  
SUNSHADE



LATERAL & REAR  
SUNSHADES



LUGGAGE-COVER



ELECTRICAL ROOF  
SUNSHADE



TOP LOADED FIXED  
MODULE



MANUAL FLUSH  
WINDOW



BOTTOM LOADED  
FIXED MODULE



TOP LOADED OUTER  
SLIDING  
1 PANEL



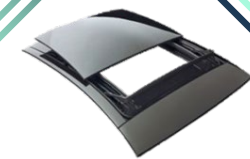
ELECTRICAL FLUSH  
WINDOW



TOP LOADED OUTER  
SLIDING



TOP LOADED  
SPOILER



TOP LOADED  
SPOILER  
2 PANELS



FLUSH DOOR  
PANEL



BOTTOM LOADED  
OUTER SLIDING  
2 PANELS



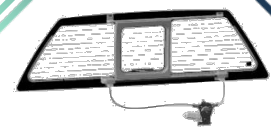
BOTTOM LOADED  
INNER SLIDING  
1 PANEL



FLUSH SLIDING DOOR  
PANE



BOTTOM LOADED  
INNER SLIDING  
2 PANELS

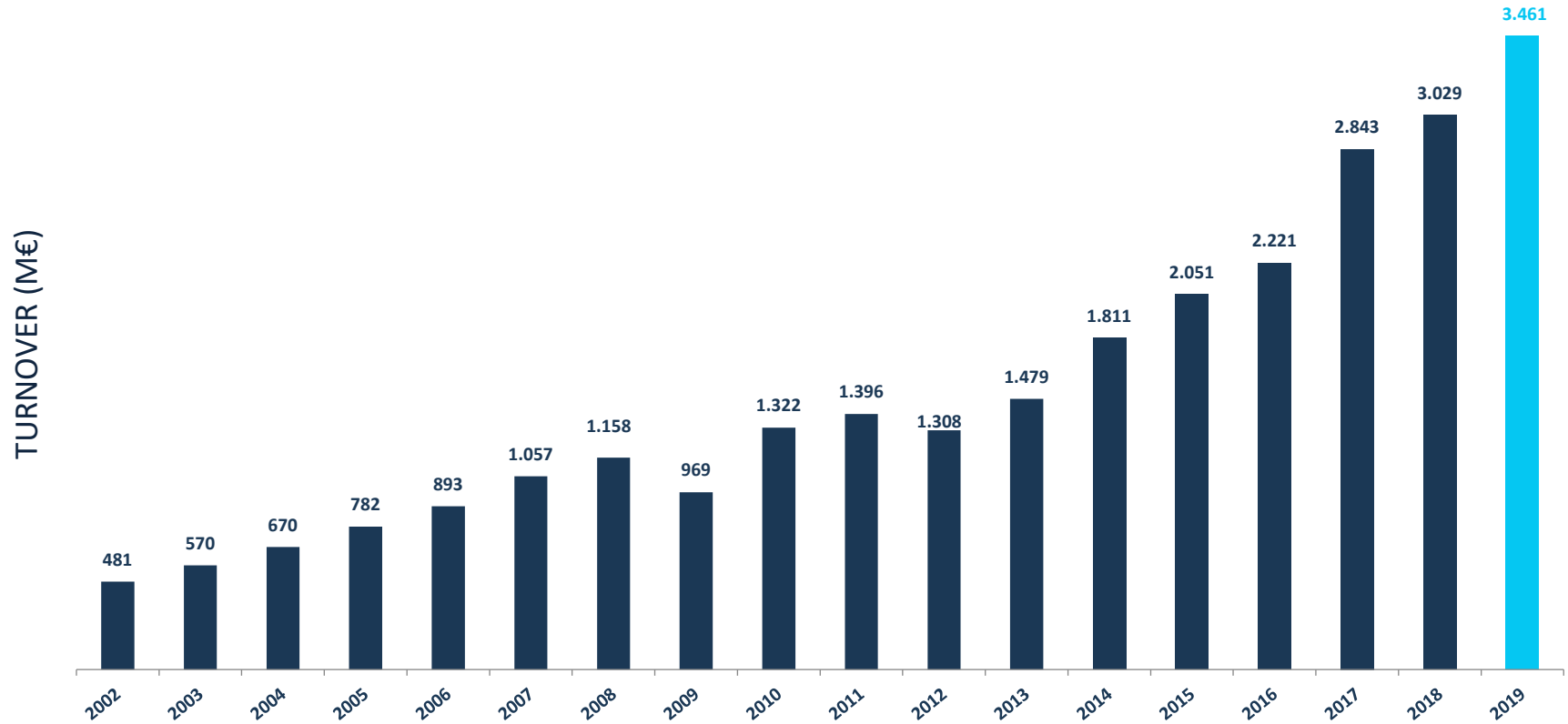


FLUSH BACKLITE

## ROOF SYSTEMS



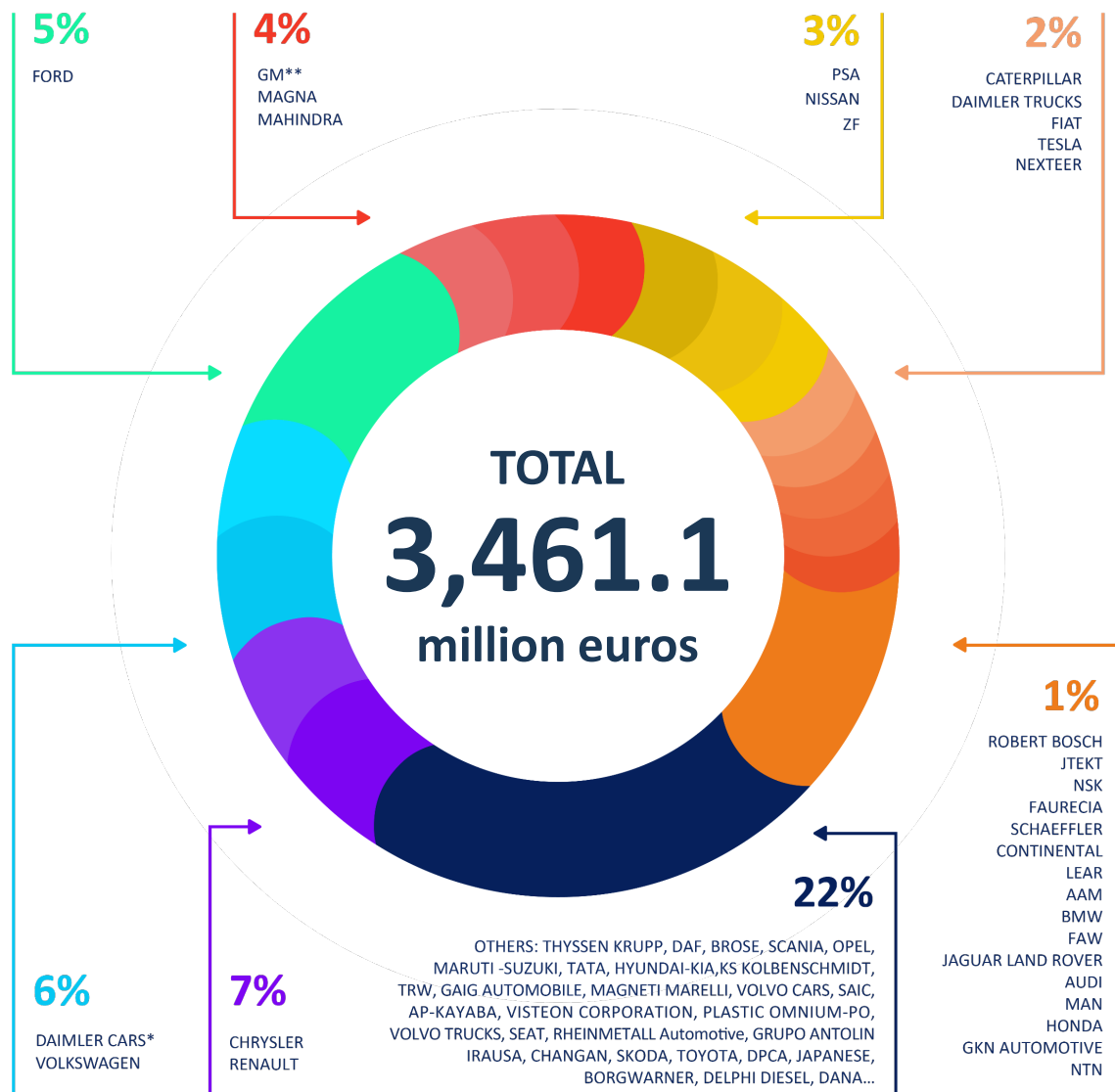
### CIE AUTOMOTIVE HAS GROWN AT A 12% CAGR OVER THE 2002-2019 PERIOD



Automotive Business comparable following 2018 accounting perimeter.

## 7. SALES BY CUSTOMER

# SALES BY CUSTOMER 2019



\*Includes 3% of BBAC (BAIC-DAIMLER JV) sales.

\*\*Includes 1% of SGM (SAIC-GM JV) sales.





***CIE Automotive***

MANAGING HIGH VALUE ADDED PROCESSES